

OracleDatabase as Barcode / RFID Solution Provider

Max Münch, Groke Tueren und Tore GmbH
Wolfgang Scherrer
infomArt GmbH
wscherrer@infomart.de
+491716947441

The Customer



ALUMINIUM ENTRANCE DOORS

**KREADOOR DOOR
CONFIGURATION TOOL**

ACCESS SYSTEMS

THE COMPANY

SERVICE

DEALER AREA

CONTACT

IMPRINT

DATA PROTECTION
DECLARATION

GROKE EN • Groke entrance doors, doors

English



GROKE TÜREN & TORE GMBH

Wikingerstraße 10
D-76189 Karlsruhe

Phone 0721/5982 - 0

Fax 0721/5982 - 55

info@groke.de

A company of the
SOMMER Group



Facebook

Kreadoor door configuration

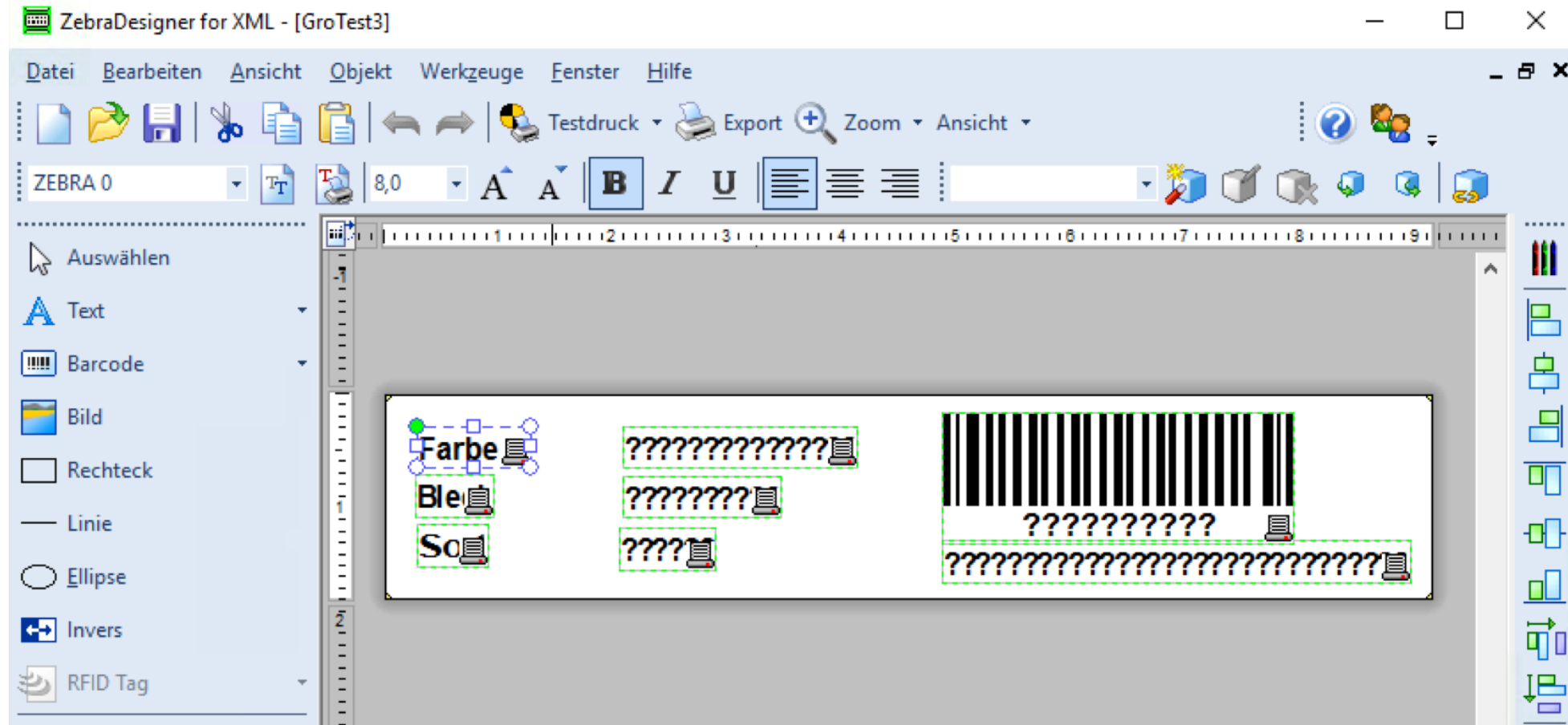
KREADOOR DOOR CONFIGURATION TOOL

**"Progress is not about improving what already exists; it's about aligning yourself with what will be."
Khalil Gibran**

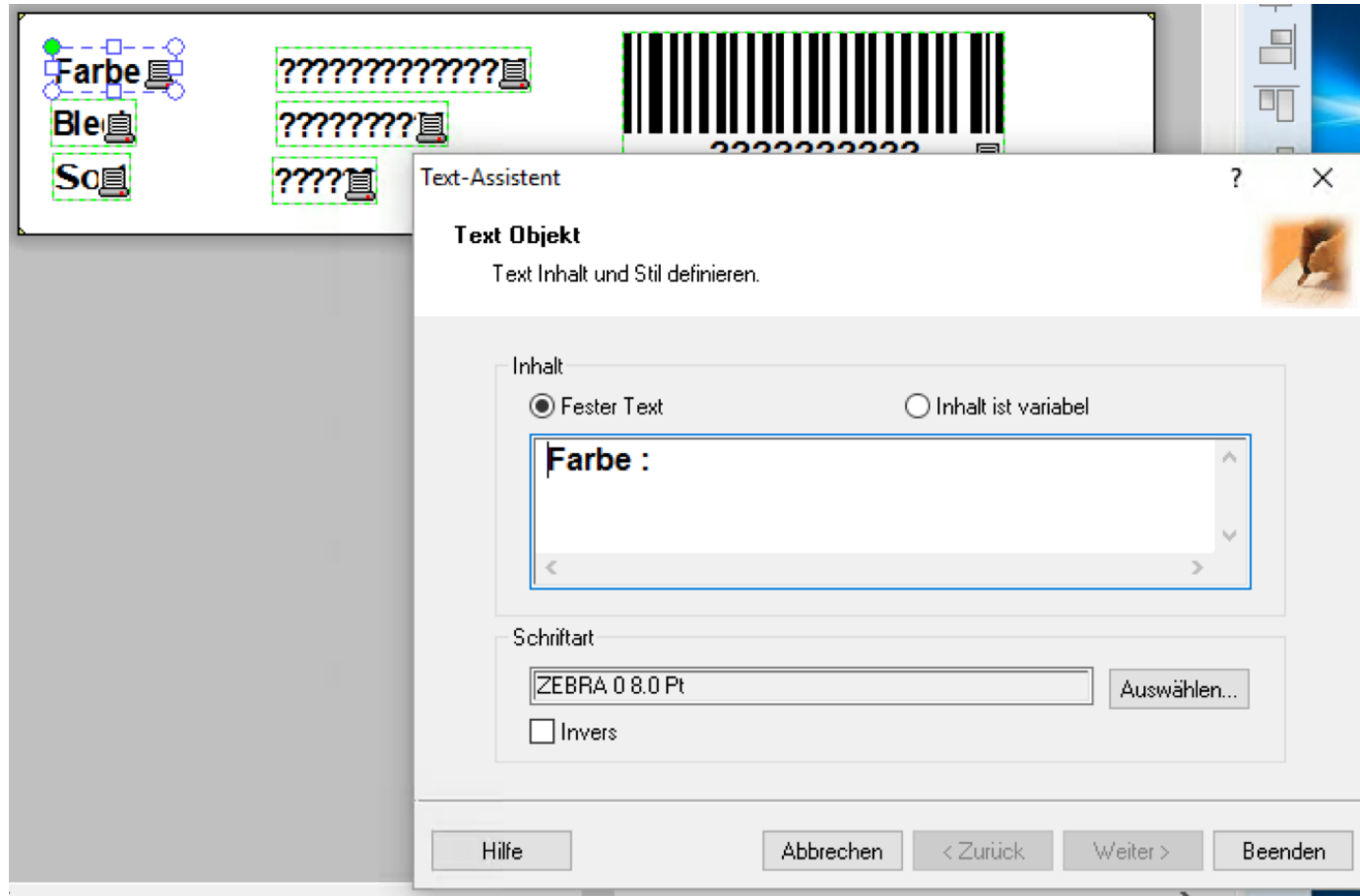
What is the first, most important thing you notice about a door? Clearly, it's the design. Only then do issues such as the insulation value, sound insulation and security come into consideration. Of course, our aluminium entrance doors shine in all of these respects.

To make your decision for a Groke door easier, we offer you the Kreadoor configuration tool, which allows you to configure your door to your satisfaction and insert it into a photo of your home in exactly the right size. You thus know right from the outset how well a Groke door will suit your house.

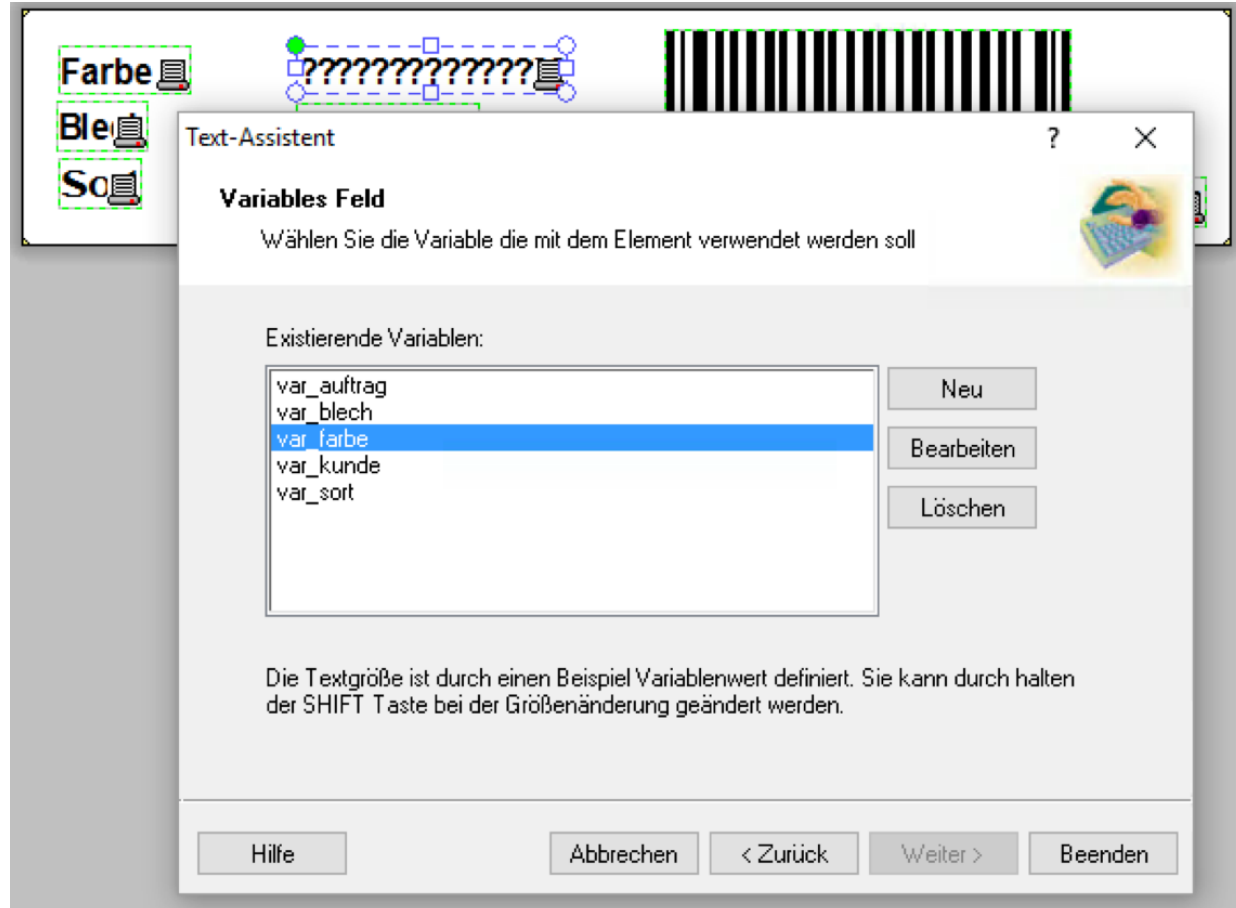
Design Label Layout



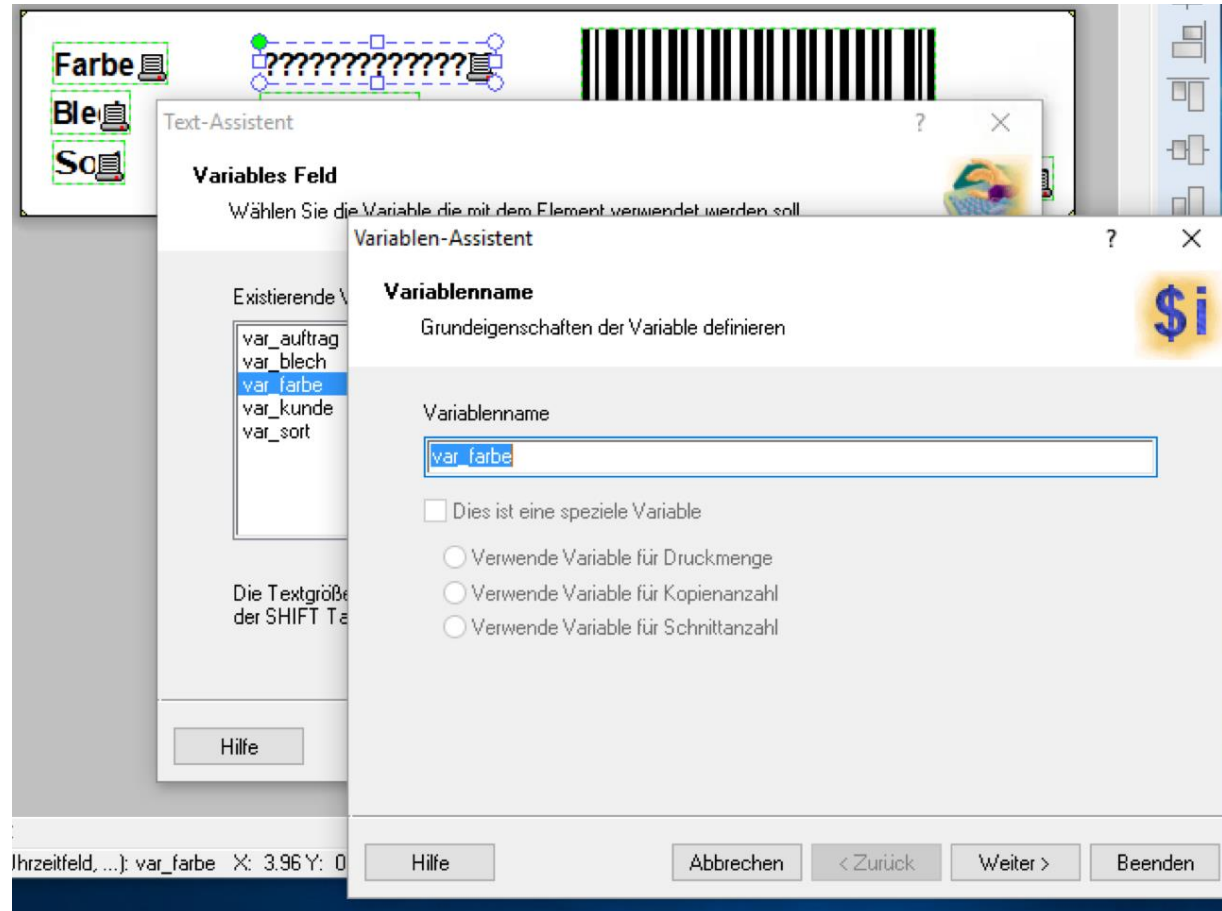
Create fixed Label Objects



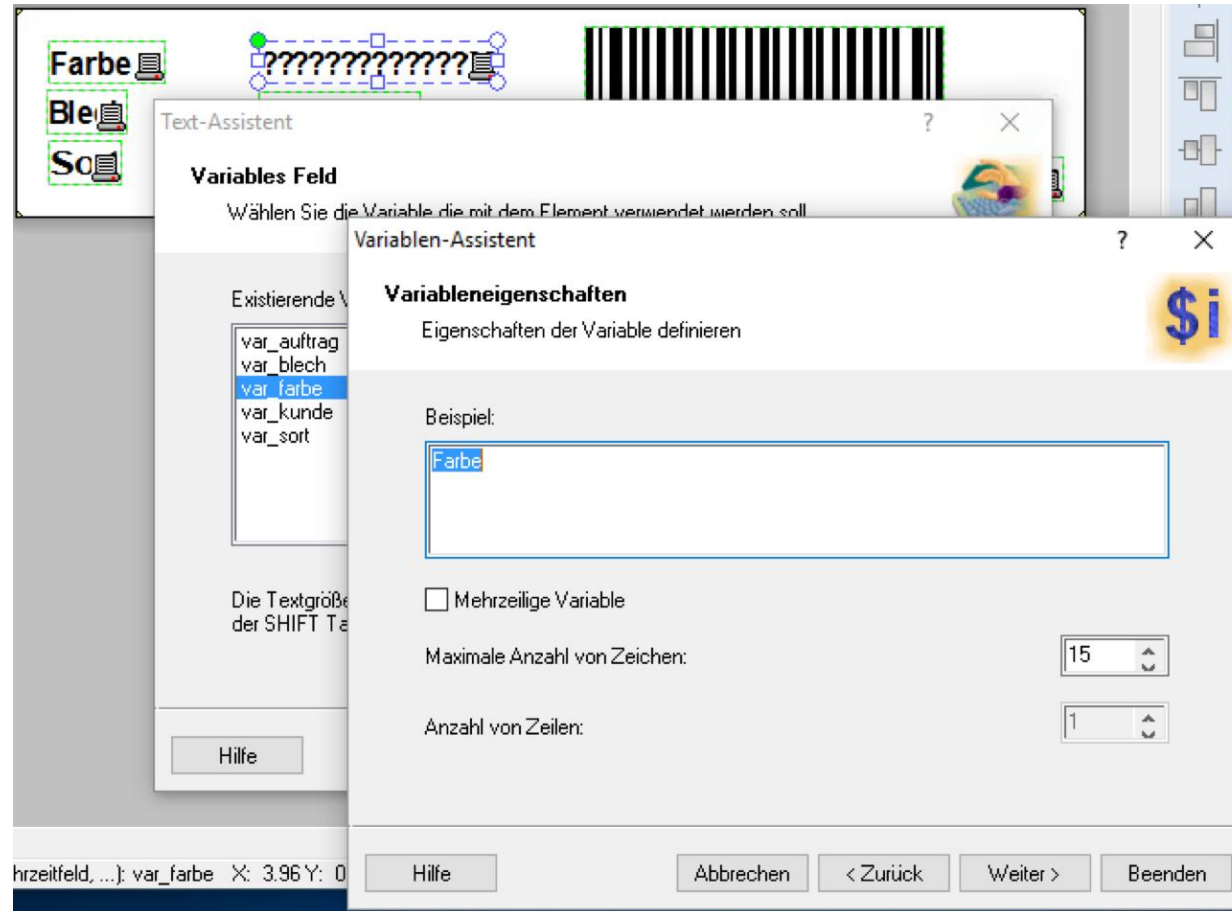
Create variable Label Objects



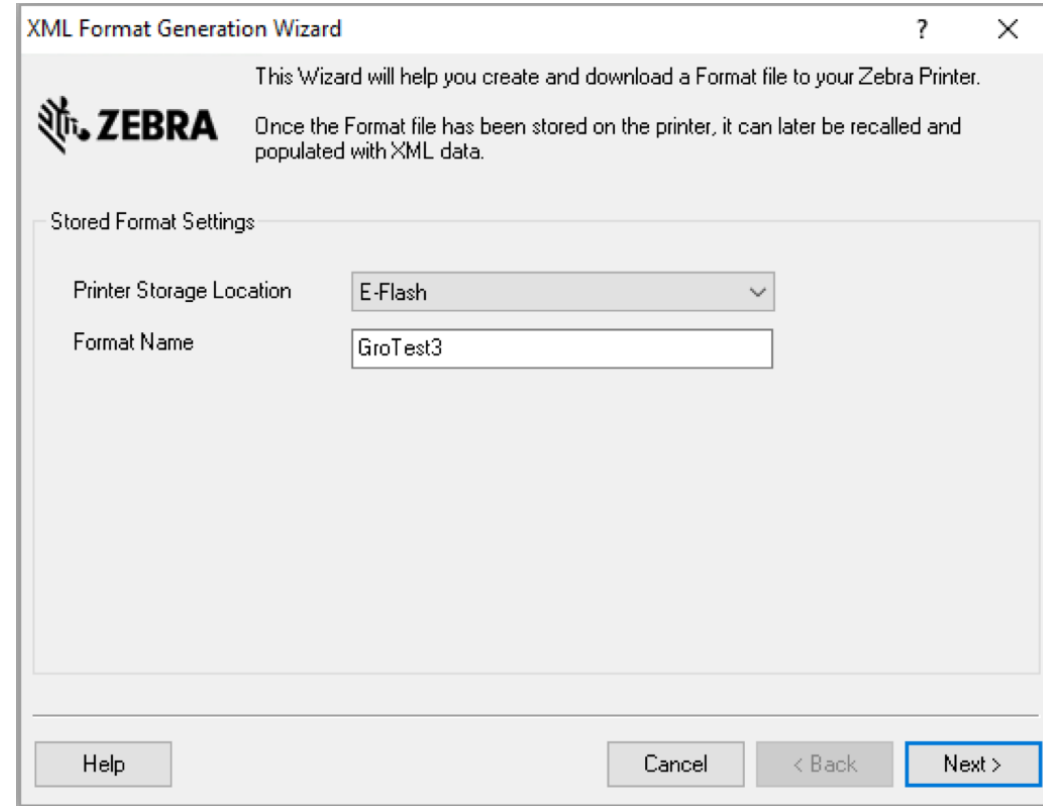
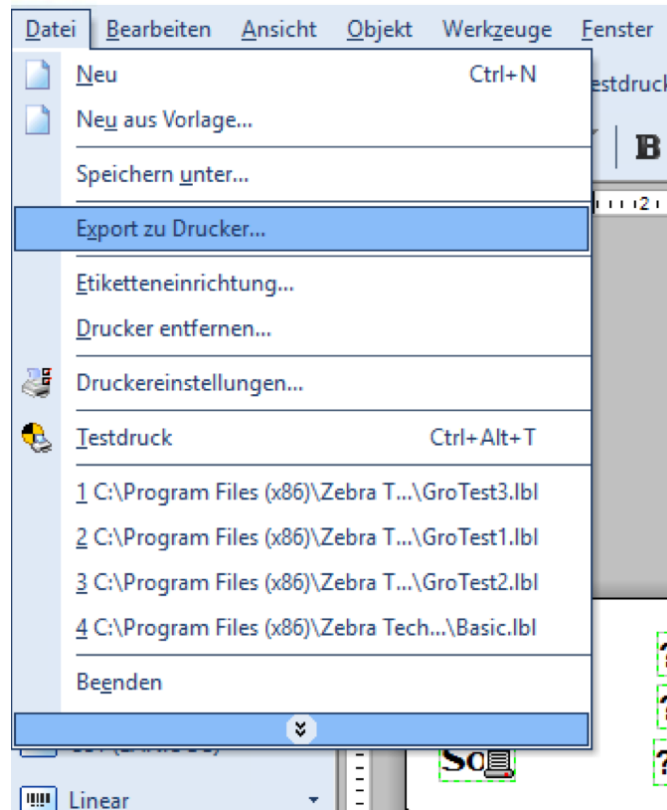
Create variable Label Objects



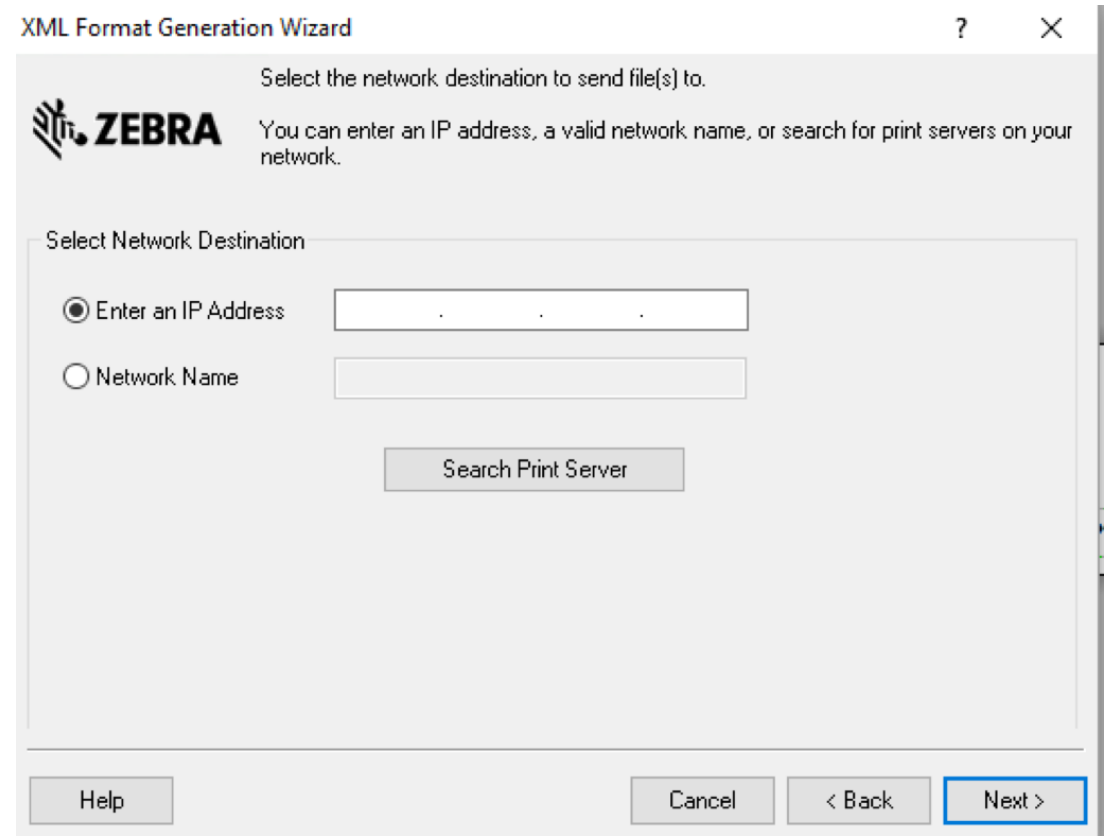
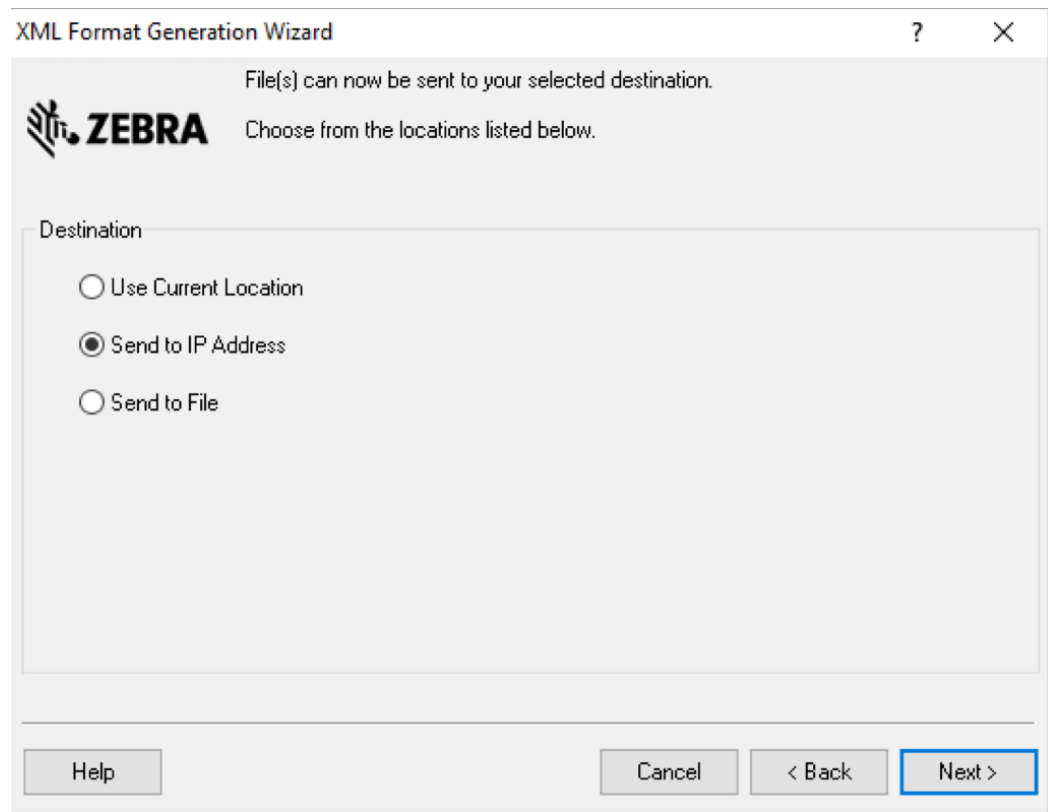
Create variable Label Objects



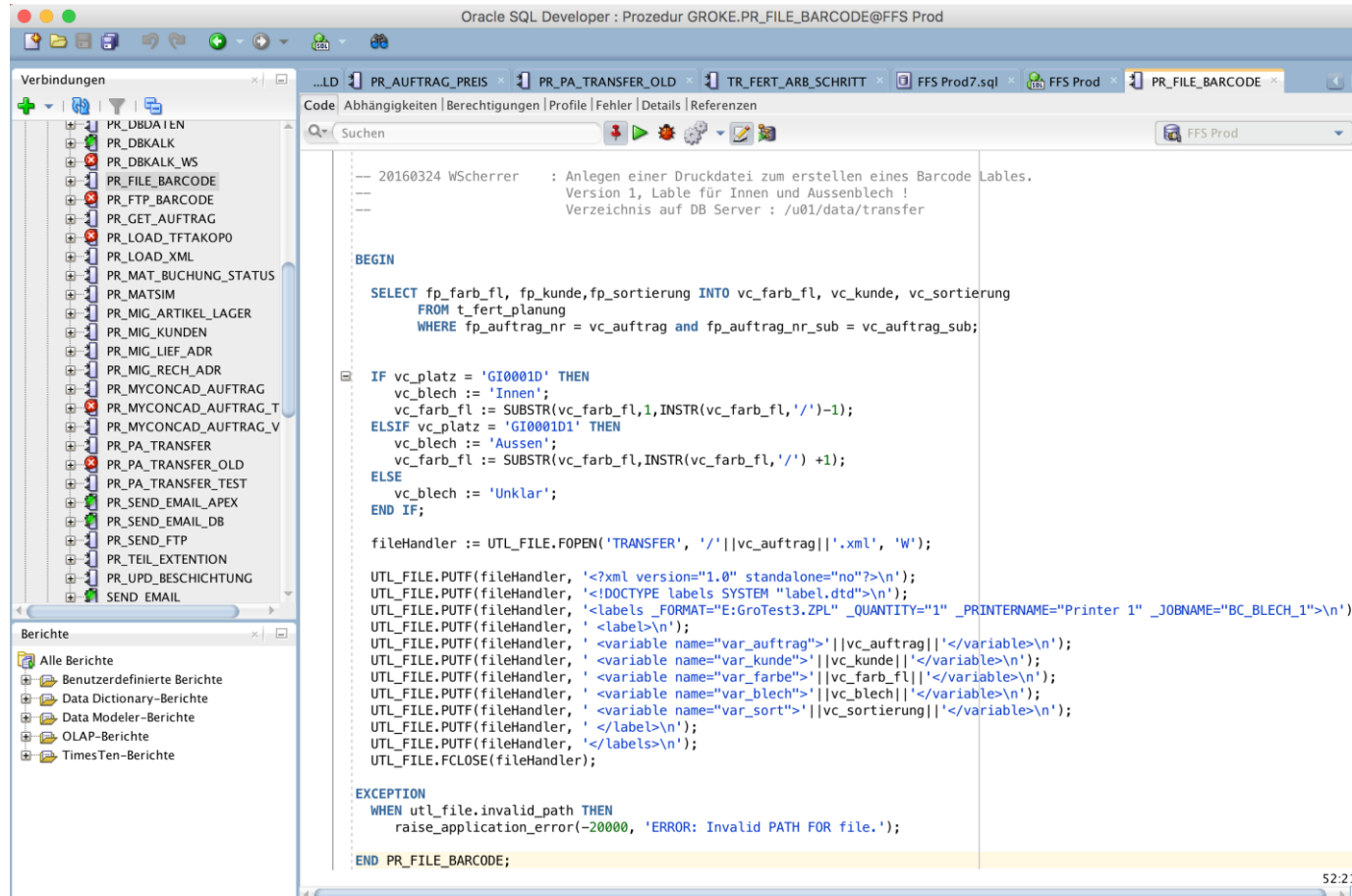
Export label layout file to network printer !



Export label layout file to network printer !



PLSQL procedure -> create XML file with label content



```
Oracle SQL Developer : Prozedur GROKE.PR_FILE_BARCODE@FFS Prod

Verbindungen
PK_DBDATEN
PR_DBKALK
PR_DBKALK_WS
PR_FILE_BARCODE
PR_FTP_BARCODE
PR_GET_AUFTRAG
PR_LOAD_TFTAKOPO
PR_LOAD_XML
PR_MAT_BUCHUNG_STATUS
PR_MATSIM
PR_MIG_ARTIKEL_LAGER
PR_MIG_KUNDEN
PR_MIG_LIEF_ADR
PR_MIG_RECH_ADR
PR_MYCONCAD_AUFTRAG
PR_MYCONCAD_AUFTRAG_T
PR_MYCONCAD_AUFTRAG_V
PR_PA_TRANSFER
PR_PA_TRANSFER_OLD
PR_PA_TRANSFER_TEST
PR_SEND_EMAIL_APEX
PR_SEND_EMAIL_DB
PR_SEND_EMAIL_FTP
PR_TEIL_EXTENTION
PR_UPD_BESCHICHTUNG
SEND EMAIL

Berichte
Alle Berichte
Benutzerdefinierte Berichte
Data Dictionary-Berichte
Data Modeller-Berichte
OLAP-Berichte
TimesTen-Berichte

Code
Abhängigkeiten | Berechtigungen | Profile | Fehler | Details | Referenzen
Suchen
FFS Prod

-- 20160324 WScherrer : Anlegen einer Druckdatei zum erstellen eines Barcode Lables.
-- Version 1, Lable für Innen und Aussenblech !
-- Verzeichnis auf DB Server : /u01/data/transfer

BEGIN

SELECT fp_farb_fl, fp_kunde,fp_sortierung INTO vc_farb_fl, vc_kunde, vc_sortierung
FROM t_fert_planung
WHERE fp_auftrag_nr = vc_auftrag and fp_auftrag_nr_sub = vc_auftrag_sub;

IF vc_platz = 'GI0001D' THEN
vc_blech := 'Innen';
vc_farb_fl := SUBSTR(vc_farb_fl,1,INSTR(vc_farb_fl,'/')->1);
ELSIF vc_platz = 'GI0001D1' THEN
vc_blech := 'Aussen';
vc_farb_fl := SUBSTR(vc_farb_fl,INSTR(vc_farb_fl,'/') +1);
ELSE
vc_blech := 'Unklar';
END IF;

fileHandler := UTL_FILE.FOPEN('TRANSFER', '/'||vc_auftrag||'.xml', 'W');

UTL_FILE.PUTF(fileHandler, '<?xml version="1.0" standalone="no"?>\n');
UTL_FILE.PUTF(fileHandler, '<!DOCTYPE labels SYSTEM "label.dtd">\n');
UTL_FILE.PUTF(fileHandler, '<labels _FORMAT="E:GroTest3.ZPL" _QUANTITY="1" _PRINTERNAME="Printer 1" _JOBNAME="BC_BLECH_1">\n');
UTL_FILE.PUTF(fileHandler, ' <label>\n');
UTL_FILE.PUTF(fileHandler, ' <variable name="var_auftrag">||vc_auftrag||</variable>\n');
UTL_FILE.PUTF(fileHandler, ' <variable name="var_kunde">||vc_kunde||</variable>\n');
UTL_FILE.PUTF(fileHandler, ' <variable name="var_farbe">||vc_farb_fl||</variable>\n');
UTL_FILE.PUTF(fileHandler, ' <variable name="var_blech">||vc_blech||</variable>\n');
UTL_FILE.PUTF(fileHandler, ' <variable name="var_sort">||vc_sortierung||</variable>\n');
UTL_FILE.PUTF(fileHandler, ' </label>\n');
UTL_FILE.PUTF(fileHandler, '</labels>\n');
UTL_FILE.FCLOSE(fileHandler);

EXCEPTION
WHEN utl_file.invalid_path THEN
raise_application_error(-20000, 'ERROR: Invalid PATH FOR file. ');

END PR_FILE_BARCODE;
```

Label XML conten file

```
<?xml version="1.0" standalone="no"?>
<!DOCTYPE labels SYSTEM "label.dtd">
<labels _FORMAT="E:GroTest3.ZPL" _QUANTITY="1" _PRINTERNAME="Printer 1" _JOBNAME="
BC_BLECH_1">
  <label>
    <variable name="var_auftrag">GF304829</variable>
    <variable name="var_kunde">METAKU (30-1)</variable>
    <variable name="var_farbe">F9007/F9007</variable>
    <variable name="var_blech">Unklar</variable>
    <variable name="var_sort">8401</variable>
  </label>
</labels>
~
~
~
~
~
~
```

Perl, batch job source -> Send file to printer !

```
#!/usr/bin/perl

use strict;
use warnings;
use Net::FTP;

use constant HOSTNAME => '10.17.200.113';
use constant USERNAME => 'admin';
use constant PASSWORD => 'zebra';

my $dir = '/u01/data/transfer';

opendir(DIR, $dir) or die $!;

while (my $file = readdir(DIR)) {

# We only want files
next unless (-f "$dir/$file");

# Use a regular expression to find files ending in .txt
next unless ($file =~ m/\.xml$/);

print "Barcode drucken : $file\n";

my $host = Net::FTP->new(HOSTNAME)
    or die "Cannot connect to ", HOSTNAME, ": $!\n";
```

Conclusion

- Questions ?
- Comments ?